

Windows Vista/7 Wireless Connection Guide

June 21, 2012

1. Download the Zip folder from the intranet notice titled “Wireless Setup Guide”
2. Transfer this Zip folder onto your Laptop using a flash drive.
3. Extract the Zip folder

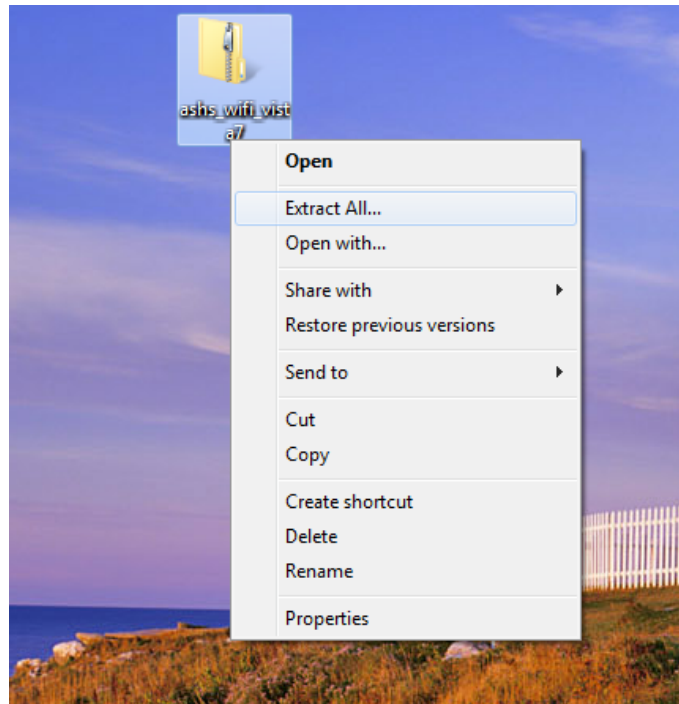


Figure 1: Right Click and select Extract

4. Open up the extracted folder and double click on the file called “wifi”

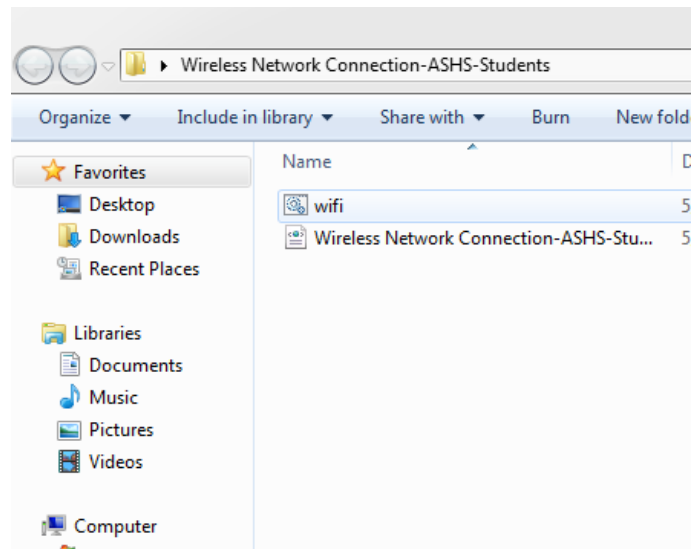


Figure 2: Double click file called “wifi”

5. Restart your Computer
6. Connect to the Wireless Network called: ASHS-Students
7. It will ask you for your Username and Password. If you are asked for a Domain, leave this field blank.

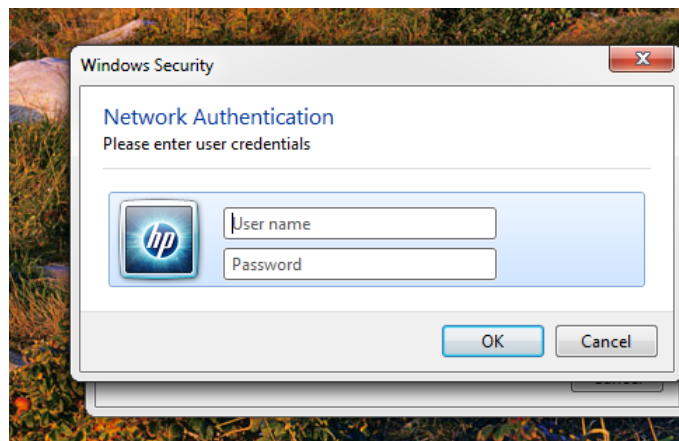


Figure 3: Enter Username and Password

You should now be able to enjoy wireless on your laptop. Contact the IT Help Desk if you have any problems.